

ABC Planner™

2.0

Decision Support Empowerment

Easy to use yet powerful

ABC Planner™ is an entry level Decision Support System designed to resolve planning, scheduling or costing problems. It works on top of a world renown simulation engine, AutoMod™, an industrial caliber discrete-event simulation package that is recognized for its flexibility and speed.

ABC Planner is easy to use and does not require any technical expertise. It has been developed for users that need quick results but have little time. With minimum effort one can represent an actual work environment (a model), and execute all company activities or operations in high speed simulation mode. This instantly enables one to foresee future results and events for all activities. Therefore, intelligent decisions can be made to achieve greater productivity at the least cost.

ABC Planner uses concepts and functionality found in AutoSched™, a full scale industrial finite capacity planning and scheduling software used by major Fortune 500 companies.

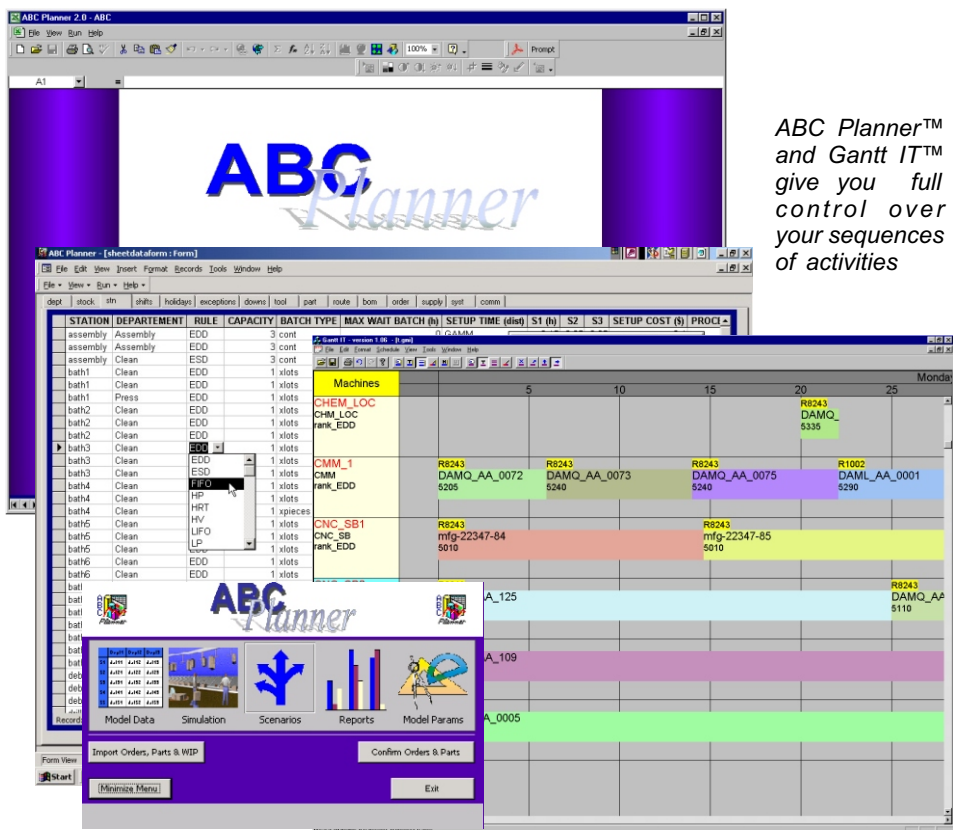
Versatile and multilingual

ABC Planner can be successfully applied, in a wide variety of environments (e.g. manufacturing, engineering, health-care, etc.).

Taking advantage of user-defined dictionaries, the specific vocabulary of a company or profession can be used in ABC Planner's menus and headers, making it extremely familiar and easy to use. Similarly, the reports can be tailored with custom headers and contents. English and French language support is built-in; other languages can easily be added.

ABC Planner can be successfully applied to solve problems in :

- Capacity planning (# of machines ; quantity of personnel...)
- Finite capacity advanced planning and scheduling (APS)
- Activity based-costing (ABC)
- Simulation of *Business Process Reengineering* (BPR) scenarios
- Material and components planning
- Long term forecasting



ABC Planner™ and Gantt IT™ give you full control over your sequences of activities

Easy data entry

Data can be entered manually on the data entry screens, downloaded from an enterprise database or received from another component of the company's information systems (e.g. MRP, MES, SFC, etc.).

Detailed modeling

An ABC Planner model is created by entering pertinent information about the work environment. Supported modeling information includes:

- resources (machines, workers, etc.)
- waiting lines and warehouses
- work shifts and calendars
- Routings and BOM
- orders and supplies

(See table on the back for more details)

Detailed reports quickly

When the simulation engine completes a simulation run (usually within seconds or minutes) the resulting reports can be displayed, printed or exported to Excel™.

ABC Planner comes with some pre-defined charts, histograms and reports. The generated statistical reports may be enhanced using the Excel charts wizard. Reports belong to the following three categories :

- Tables of statistics for machines, departments, products, individual routing steps
- Periodical reports on station utilization (finite capacity mode) and inventory levels
- Detailed plans and activity sequence per lot, step, critical event (available as dispatch lists as well as Gantt charts,).

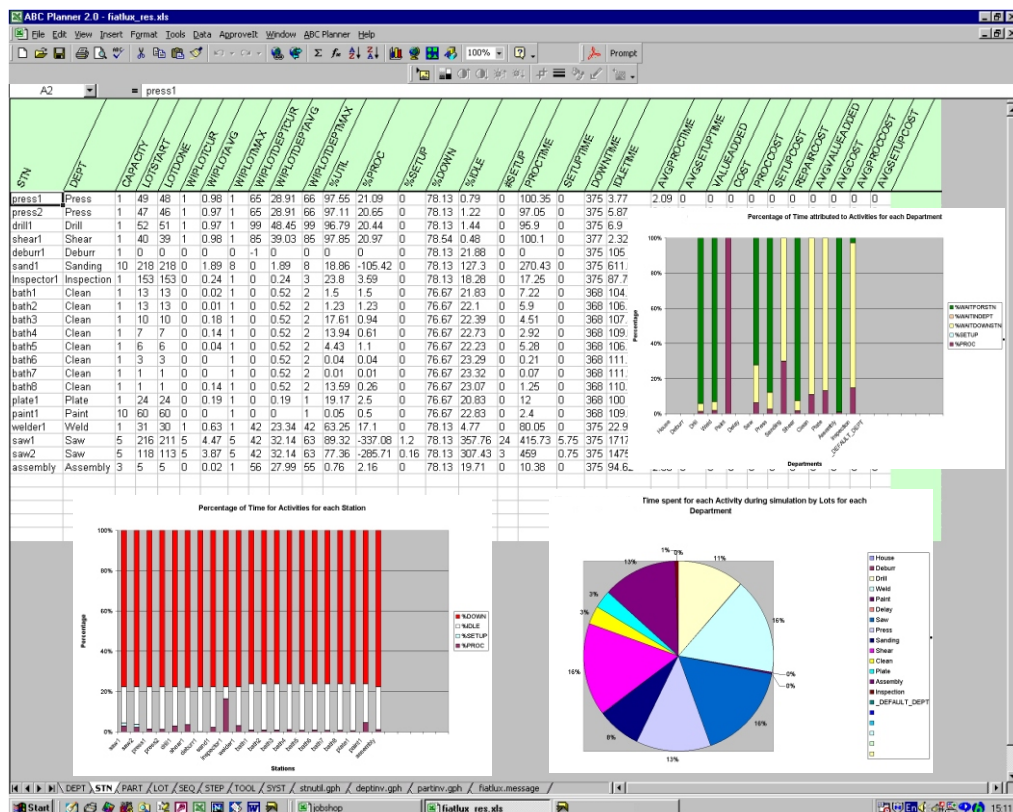
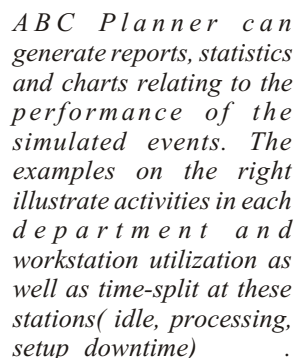
NB: Gantt It is an optional software for ABC Planner, MultiAXS and AutoSched



MultiCIM Technologies Inc.

640, Lakeshore dr., suite 101
Dorval (Québec) H9S 2B6
Tél. : (514) 633-6401
Fax : (514) 633-6495

E-mail: info@multicim.com
www.multicim.com



Data sheet	Information
1. Departments	Lists the various work areas. An area can be a job shop or an entire bank, or a group of machines capable of carrying out the same series of operations. Each department has its own capacity and waiting cost.
2. Stocks	Lists the storage or waiting areas with their capacity and storage costs.
3. Stations	Lists individual work centers or key resources. These resources belong to a department, use individual scheduling rules (among 14 possible choices) to sequence their activities. Setup time and costs can also be identified at this level. Batch processing stations (e.g. furnaces) with continuous access can be represented in ABC Planner.
4. Aux. Resources	Lists individual auxiliary resources that can be used together with a key resource for an operation (e.g. special fixtures, operators, documents etc.).
5. Calendars	Work, breakdown and preventive maintenance calendars. These calendars are attached to stations.
6. Products	Types of activities or products (including part references such as end items, sub-assemblies, raw material). Each type can have its own generic raw cost and sales price as well as an initial quantity in stock.
7. Routes	Sorted list of steps to produce the parts for each type defined. A step may involve a department, auxiliary resource, setup information as well as expected (fixed or variable) processing time. Value added and processing cost can also be considered.
8. BOM	Multi-level bill of material (BOM) listing components, quantities, assembly steps and launch criterion for each assembly required. 3 cascade launching policies are available in ABC Planner.
9. Orders	Lists of the activities to be simulated. An order always concerns a product or service to be received by a specific due date and in a given quantity. Orders can be repeated at a deterministic or stochastic frequency.
10. Supplies	Details the scheduled deliveries of components, sub-contracted items and raw material. Supply orders can also be repeated.
11. General	General information (such as indirect cost driver)



**640, Lakeshore dr., suite 101
Dorval (Québec) H9S 2B6
Tél. : (514) 633-6401
Fax : (514) 633-6495**

E-mail: info@multicim.com
www.multicim.com

Microsoft Excel™ is a trademark of Microsoft Inc.
AutoSched™, AutoMod™, AutoStat™ are trademarks of AutoSimulations Inc.
ABC Planner™, MultiAXS™, Gantt It™ are trademarks of MultiCIM Technologies Inc.

